



# THE CURRENT

THE OFFICIAL COMMUNITY RELATIONS NEWSLETTER OF SEM-CALACA POWER CORPORATION AND SOUTHWEST LUZON POWER GENERATION CORPORATION

SUBSIDIARIES OF SEMIRARA MINING AND POWER CORPORATION

VOLUME 1 ISSUE 3 | JULY - SEPTEMBER 2021



## ADHIKA: PAGTUTULUNGAN NG SCPC, SLPGC AT DACANLAO TUNGO SA INKLUSIBONG PAG-ASENSO

Bilang mga kompanya na nagpapatupad ng mga programang pangkaunlaran para sa komunidad, ang Sem-Calaca Power Corporation (SCPC) at Southwest Luzon Power Generation Corporation (SLPGC) ay naging katuwang ng Barangay Dacanlao, Calaca, Batangas upang maisakatuparan ang pagbuo ng isang kooperatiba sa pamumuno nina G. Simplicio Malabanan, Engr. Ronilo Bautista, G. Arnel Decipeda, G. Mario Secreto at Konsehal Luis Macalalad.

>>PAHINA 7



### MARINE SANCTUARY PROTECTION SUPPORT FOR BALAYAN FOLKS

PAHINA 5



### PAGSUMIKAPAN ANG PANGARAP NA TAGUMPAY

PAHINA 10



### PAANO NAGIGING KURYENTE ANG COAL?

PAHINA 11



**Engr. Denel C. Mateo**  
Vice President  
and Manager,  
SCPC and SLPGC

Ano nga ba ang *Mission* at *Vision*? Bakit ito mahalaga sa isang organisasyon? Ito ang nagsisilbing direksyon sa nais nating patunguhan kaya napakahalagang maging malinaw ang mga ito sa bawat kasapi upang magkaroon sila ng iisang landas na tatahakin. Dito nakasaad ang pangkalahatang layunin ng isang organisasyon.

Sa SCPC and SLPGC, pinagtutuunan ng pansin ang pagpapanatili ng reputasyon at kalidad ng serbisyo na ibinibigay nito sa mga konsyumer kaya napakahalaga para sa bawat isa sa atin na isaisip at isapuso ang misyon at bisyon nito. Bukod sa pansariling layunin, ang lahat ng manggagawa ay inaasahang sundin at itatak sa isipan ang mga layunin ng kompanya na siyang magiging batayan ng kakayanan ng bawat indibidwal na gawin ang kanilang mga tungkulin.

Ako'y nagagalak sapagkat nakikita ko ang pagkakaisa at pagkakabuklod-buklod ng lahat ng manggagawa. Hindi maikakaila ang kanilang sigasig at tiyaga upang makatulong sa pagsasakatuparan ng nasimulang layunin. Nailalarawan ko na sa aking isipan ang patuloy na pag-unlad at pag-usbong ng ating industriya. Buong pasasalamat at pagbati sa lahat ng manggagawa ng Calaca Power Complex.

Ang tagumpay ng isang organisasyon ay hindi lamang tagumpay ng pamunuan kundi pati na rin ng lahat. Makakamit natin ito sa ating pagtutulungan at pagkakaisa sa lahat ng pagkakataon. Bilang isa sa mga namumuno, pantay-pantay ang aking pagtingin sa aking mga nasasakupan. Pinakikinggan ko ang saloobin ng bawat isa at pinahahalagahan ang bawat gawain, maliit man o malaki ang dulot nito.

Napakarami kong naging karanasan sa mga taong nakasama ko habang tinatahak ang landas kung nasaan man ako ngayon. Pinatatag ako ng panahon at pinagtibay ng mga pagsubok na aking nalampasan. Hindi masamang magkamali sa ating mga desisyon na maaaring magdulot sa atin ng pag-aalinlangan sa sariling kakayahan. Ang mahalaga ay natututo tayo sa mga pagkakamaling ito dahil katulad ng araw, lulubog ito pagsapit ng dilim subalit muli itong sisikat na may dalang panibagong pag-asa at liwanag.

Sa iyo na nagbabasa nito, nais kong sabihin na mahalaga ka, magaling ka, at may magagawa ka. Hindi masamang mangarap para sa sarili at sa pamilya. Gawin mong inspirasyon ang mga taong mahalaga sa 'yo. Madapa ka man ay muli kang bumangon dahil hindi ka magtatagumpay kung hindi ka uusad. Paunlarin mo ang iyong sarili dahil pagdating ng araw, ikaw rin ang makikinabang dito. Hindi ka nag-iisa. Sama-sama nating aabutin ang rurok ng tagumpay sa kompanyang ating pinaglilingkuran. Karamay natin ang Panginoon na nagsisilbing gabay at kalasag sa lahat ng hamon ng buhay.



**Edgardo V. Araya**  
Manager,  
Support Services,  
SCPC and SLPGC

REPUBLIC OF THE PHILIPPINES  
DEPARTMENT OF ENERGY

SEM-CALACA POWER CORPORATION

SOUTHWEST LUZON  
Power Generation Corporation

**THE CURRENT** is the official community relations newsletter of Sem-Calaca Power Corporation (SCPC) and Southwest Luzon Power Generation Corporation (SLPGC) published quarterly. Its main office is located at Barangay San Rafael, Calaca, Batangas 4212. For concerns, please contact us at 09171003876 or email to [communityrelations@semcalaca.com](mailto:communityrelations@semcalaca.com) or [communityrelations.cpc2021@gmail.com](mailto:communityrelations.cpc2021@gmail.com)

Editorial Adviser **Denel C. Mateo**  
Editor in Chief **Edgardo V. Araya**  
Managing Editor **Portia M. Vizconde**  
Associate Editor **Rafael L. Antonio**  
Editorial Assistant **Katlyn B. Panganiban** and **Vincent M. Humarang**  
Layout & Design **Kenneth James G. Ang**



*Hermilando I. Mandanas*  
**Hon. Hermilando I. Mandanas**  
 Governor of Batangas

As Governor of the Province of Batangas, it gives me an immense pleasure to extend my warmest greetings to “The Current”, the official newsletter of Sem-Calaca Power Corporation (SCPC) and Southwest Luzon Power Generation Corporation (SLPGC).

Being the number one center for power, fuel, and gas, the Province of Batangas is undoubtedly the ‘Most Powerful Province in the Country’. With companies like SCPC and SLPGC, Batangas today generates more than 5,300 megawatts of power and supplies 4,900 megawatts or 90% of the electricity requirement of the whole of Metro Manila. Apart from electricity, we are also the number one center for fuel. We have 65% of the gasoline, diesel, kerosene, aviation gas, and other oil products that pass through the Province. Also, along the Batangas Bay, we produce raw materials like plastic, polyethylene, and polypropylene. Likewise, in our economic development, we have started with our Food Terminal, which is officially declared to be the gateway of the Agro-Industrial Business Corridor of the Philippines. We also strive to continuously improve our Batangas International Port which has over seven million passengers a year, almost three times as many passengers as the Port of Manila. Although in cargo, the Port of Batangas is only the number two, but once our plan for the Batangas International Port is completed, most of the cargo would be shifted to the Batangas International Port, not only to decongest Metro Manila, but to have more operational efficiency. Through this, Batangas is also expected to soon be the logistic center of the country.

We believe that should one look at Asia, really the gateway is the Philippines. And in the Philippines, Batangas is one of the provinces that really stand out in terms of the availability of the basic ingredients for development: power, water, labor force, skills, transportation, communication, and infrastructure.

All of these things are present, that’s why I, as Governor of Batangas, am really grateful for our stakeholders like the SCPC and SLPGC who truly give valuable contribution for the holistic and inclusive development of our Province.

Mabuhay ang The Current, mabuhay ang SCPC at SLPGC!

## BRIGADA ESKWELA: SCPC, SLPGC SUPPORT DISTANCE LEARNING OF 10 CALACA AND BALAYAN SCHOOLS

To further support the continued distance learning this school year amidst the COVID-19 pandemic, SCPC and SLPGC donated 36 boxes of bond papers for the modules of 965 pupils from Calaca and Balayan, Batangas last August-September 2021.

Beneficiaries were pupils from barangay Day Care Centers of Pantay, Durungao, Caybunga, Baclaran, and Sampaga; Balayan Adventist Elementary School; Sampaga Elementary School; Balayan West Elementary School; Lucban Elementary School; and NGO Lapis Mo Kinabukasan Ko.



## CLEAN-UP DRIVE ALONG BARANGAY DACANLAO AND SAN RAFAEL

SCPC and SLPGC assisted Barangay Dacanlao LGU led by Chair Andrew Luistro in the clearing of canal and cutting of grass from its vicinity towards the adjacent Barangay San Rafael last April 2021.

The clearing operations was done to ensure accessibility of streets and to mitigate flooding during rainy season, as well as to protect the health and safety of the residents.



## CLEAN-UP ACTIVITY AT DACANLAO RIVER



Community members of Barangay Dacanlao and the Environmental unit of SCPC and SLPGC conducted clean-up activity along Dacanlao River on May 5, 2021.

Since 2012, SCPC and SLPGC have adopted the Dacanlao and Cawong rivers to support the Adopt-an-Estero/ Water Body Program of the Department of Environment and Natural Resources. The program has six routine clean-up activities yearly in collaboration with Barangay Dacanlao LGU.

## 100 MAHOGANY HILLS PROVIDED TO PAF-CALATAGAN

The Philippine Air Force-Calatagan recognized SCPC and SLPGC on July 27, 2021, for providing 100 hills of Mahogany as part of its greening program. This testifies to the commitment of the companies to engage community members in environmental stewardship.



## MARINE SANCTUARY PROTECTION SUPPORT FOR BALAYAN FOLKS

SCPC and SLPGC hosted a capacity building on coral reef assessment on July 7-8, 2021, to empower the sea patrollers of Barangay Carenahan, Balayan in assessing and determining the health of reefs.

Meanwhile, a capacity building on seaweed farming for the fishing community also from Barangay Carenahan was held on July 7-9, 2021, to provide alternative livelihood and prevent overfishing in the marine sanctuary.

The activities were held in partnership with the Bureau of Fisheries and Aquatic Resources Region 4A and Municipal Fisheries and Aquatic Resources Management Council (MFARMC) and Municipal Environment and Natural Resources (MENRO) of Balayan.



## 7,700 TREES PLANTED AT BARANGAY PATUGO

SCPC and SLPGC continue to conduct their reforestation program at the 50-hectare upland plantation at Barangay Patugo, Balayan, Batangas.

As of August 2021, about 7,700 trees have been planted within the protected area in support to the Adopt-a-National Greening Program of the Department of Environment and Natural Resources.

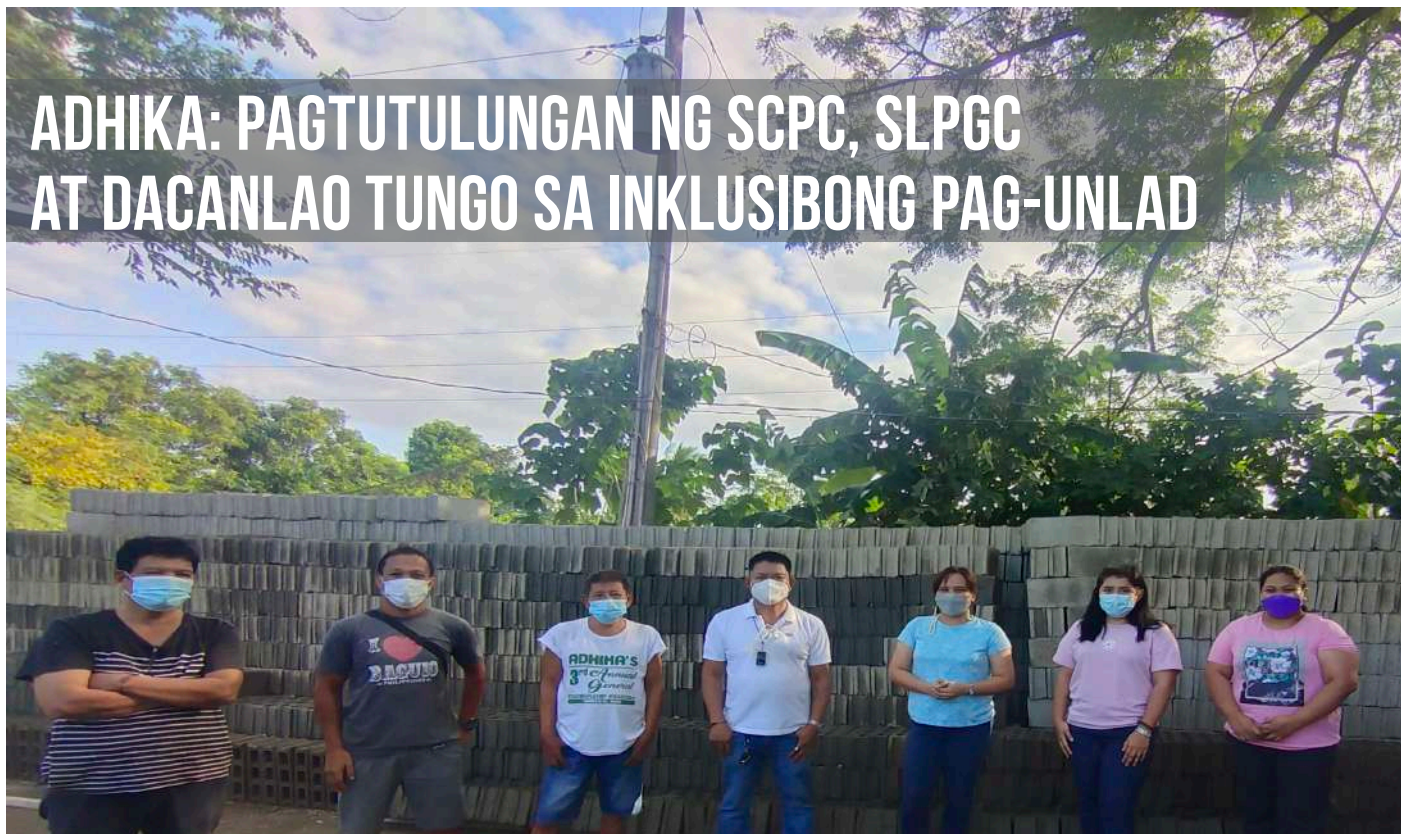




Hindi maikakaila ang mabilis na pag-usbong ng ADHIKA sa mga nagdaang taon. Naging kilala ito hindi lamang sa bayan ng Calaca kundi pati na rin sa mga karatig-bayan nito.



# ADHIKA: PAGTUTULUNGAN NG SCPC, SLPGC AT DACANLAO TUNGO SA INKLUSIBONG PAG-UNLAD



## MULA PAHINA 1

Matapos ang mga pagpupulong at masusing pagpapalano ay napagtagumpayan ang hangarin na ito noong Agosto 17, 2015, nang pormal na inilunsad ang “Asosasyon ng Dacanlao Higit sa Kaunlaran” Producers Cooperative (ADHIKA) na may pangunahing serbisyo na paggawa ng *concrete hollow blocks*.

Ang Barangay Dacanlao ay isa sa mga *host barangay* ng SCPC at SLPGC na *beneficiary* din ng mandato ng Department of Energy (DOE) na naging tulay upang magamit ang pondong mula sa ER 1-94 na nagkakahalaga ng P1.2 milyon na kanilang kapital upang masimulan ang operasyon ng kooperatiba.

Mula sa orihinal na 31 miyembro ay patuloy na lumaki ang kooperatiba at may kasalukuyang 158 miyembro.

Taong 2018 nang maaprubahan ito ng *Cooperative Development Authority (CDA)* bilang isang *multi-purpose cooperative* kaya nagbukas sila ng iba pang serbisyo tulad ng pag-angkat ng semento at bigas; *cash at appliances loan*; at *bills payment/loading/money remittances* na nakatulong din upang maging maayos ang takbo ng operasyon nito.

Sa katunayan ay nakatanggap ang kooperatiba ng ilang pagkilala gaya ng *Special Recognition Award (2019 Gawad Parangal Awardee— Regional Level)*, *Outstanding Cooperative Award (2nd Place-Small Category – Provincial Level)* noong 2019 at kamakailan lamang ay natanggap nila ang Magiting Citation Award dahil sa iniabot nilang tulong sa mga miyembro nito at sa komunidad sa kasagsagan ng pagputok ng Bulkang Taal at ng kasalukuyang pandemya.

Katulad ng marami, malaki rin ang kinakaharap na pagsubok ng ADHIKA dahil sa COVID-19. Kaya naman gumawa ng mga hakbang ang SCPC at SLPGC upang matugunan ang pangangailangan na maibalik ang normal na operasyon nito. Patuloy ang pagsubaybay ng SCPC at SLPGC dito at ipinadadala rin sila sa mga *seminar* na tumatalakay sa magandang pagpatakbo ng negosyo at epektibong pagma-market nito.

Sa kasalukuyan, ang mga *Board of Directors* nito ay nagkakapit-bisig upang mapanatili ang kaayusan at kalidad ng produkto at serbisyong ibinibigay ng kooperatiba na kinabibilangan nila Mario Secreto, *Chairperson*; Elena Relevo, *Vice Chairperson*; at mga *Board Members* na sina Basilio Macatangay,

Merlie Ibanga, at Guiller Marasigan.

Taos-pusong pasasalamat ang ipinaabot ng ADHIKA *Multi-purpose Cooperative* sa mga indibidwal at organisasyong naging bahagi at tumulong sa pagsasakatuparan ng adhikain nito. Ang SCPC at SLPGC ay patuloy na sumusuporta sapagkat nakikita nito ang pagkakaisa at pagkakawanggawa sa bawat miyembro nito. Hangad nila ang patuloy na tagumpay ng kooperatiba hanggang sa susunod pang mga taon.



# BAYANIHAN FOR TYPHOON JOLINA EVACUEES

In the spirit of bayanihan, SCPC and SLPGC provided food packs and drinking water to some 600 evacuees from Barangay San Rafael and Quizumbing affected by Typhoon “Jolina” (international name: Conson) on September 9, 2021. It made its 8th landfall in Batangas that caused severe flooding in low-lying areas. No casualty was reported in the province.



# HEALTH AWARENESS ON TB, COVID-19 FOR DURUNGAO BHWs

As part of continuing efforts to promote the well-being of residents from our impact barangay, SCPC and SLPGC conducted a health awareness on tuberculosis and COVID-19 prevention on August 19, 2021.

The virtual activity led by SCPC and SLPGC’s occupational health physician Dr. Advent Genesis Araja was attended by Barangay Health Workers (BHWs) and Sangguniang Barangay of Durungao, Balayan led by Chair Monico Pedraza.

BHWs are expected to cascade all the information and learnings obtained from this health lecture to their respective group in the community.



# WHAT TO KNOW ABOUT THE DELTA VARIANT



## ORIGINAL COVID-19 STRAIN



## DELTA VARIANT COVID-19 STRAIN



Delta spreads more easily. It infects more people and spreads faster than other variants of the virus that causes COVID-19.



Vaccinated people are at low risk



Unvaccinated people are at higher risk

for severe illness, hospitalization and death.

Delta might cause more severe illness than other variants in unvaccinated people.

Fully vaccinated people are much less likely than unvaccinated people to get very sick from Delta, but some can still be infected by and spread Delta.

## HOW YOU CAN SLOW THE SPREAD OF DELTA VARIANT

- ✓ Vaccines help protect you from getting very sick from COVID-19, including from illness caused by the **Delta variant**. They can also reduce the spread of the virus in your community.
- ✓ If you're in an area of **substantial or high transmission**, wear a mask indoors in public even if you're fully vaccinated.
- ✓ If you've been exposed to COVID-19 or developed symptoms, **get tested even if you're fully vaccinated**.
- ✓ If you're a **community or business leader**, encourage vaccination and wearing of mask to help prevent further spread of Delta, especially in areas of high or substantial transmission.
- ✓ If you're a teacher, staffer, student, or parent of a student, **wear a mask at school**, even if you're fully vaccinated.

## I'M STILL CONSIDERING GETTING VACCINATED. WHAT DO I NEED TO KNOW ABOUT DELTA?

There's strong evidence that **Delta** is much more transmissible than earlier variants of COVID-19 which puts you in greater danger of becoming sick even in areas where cases are falling.

You should get vaccinated as soon as possible and keep wearing a mask and avoiding crowded indoor spaces until you are fully vaccinated.



## WHEN SHOULD YOU GET TESTED?



EARLIER STRAINS

5-8 DAYS

3-5 DAYS

DELTA VARIANT

Hindi madali ang mamulat sa kapos na pamumuhay—ang realidad ng buhay na aking tinanggap at naging direksyon tungo sa tagumpay.

Simula pa lang ay amin nang nasaksihan lahat ng sakripisyo ng aming mga magulang mapunan lang ang aming mga pangangailangan. Mula sa pawis ng aking ama sa pagkakarapintero ang sumusuporta sa aming pang-araw araw. Sa kung paano nila kami ginapang upang makapagtapos ng elementarya at sekondarya, sinuklian namin sila ng sipag at tiyaga na makamit ito.

Subalit, sa kakarampot na kita ay hindi kakayanin ang mapag-aral kami ng sabay ng aking kapatid sa kolehiyo. Mabuti na lang at sadyang madiskarte ang aking ina at buong tiyaga naming hinanap at inasikaso lahat ng *scholarship* na puwede naming pag-aplyan. Punta dito, punta doon, sulong sa initan.

Sa sobrang bait ng Panginoon, dininig niya ang aming panalangin. Isa ako sa mga pinalad na mapabilang at maging iskolar ng Sem-Calaca Power Corporation (SCPC) at limang taon na sinuportahan sa napili kong kurso sa University of Batangas.

Sa halos suntok sa buwan na oportunidad, nagsumikap ako. Oo mahirap, kapag napagod ay pahinga lang pero bawal sumuko. Ang *scholarship* na 'to ang isa sa mga nagbabago ng buhay ko at binigyan katuparan lahat ng pangarap ng magulang ko. *Because the Lord God is true to His promises, I graduated with a degree of Bachelor of Science in Electrical*



## PAGSUMIKAPAN ANG PANGARAP NA TAGUMPAY

Ni Engr. Hazeline Catchillar  
SCPC Planning & Scheduling Engineer

*Engineering and He even made it possible for me to be a licensed electrical engineer.*

Pagkapasa ko ng aking *board* noong 2018 ay hindi doon natapos ang tulong at paggabay ng Sem-Calaca. Agad din akong nakakuha ng posisyon sa planta at napabilang sa *Cadetship Program*—ang aking pagsisimula sa tunay na laban. Nagtuluy-tuloy hanggang sa ako ay magkaroon ng posisyon bilang *Planning & Scheduling Engineer*. Mula sa una kong hakbang hanggang sa matuto akong tumayo sa sarili kong paa, hindi mo ako pinabayaan, Sem-Calaca Power Corporation. Kulang ang salitang

“salamat” para sa lahat.

Samahan mo ng dasal, tiyaga at puso ang bawat pangarap at siguradong malayo ang mararating ng iyong lipad. Makakarating ka din sa tagumpay, unti-unti, dahan-dahan.

Simula noong 2010, mahigit 89 iskolar na ang nasuportahan ng SCPC at SLPGC upang makapag-aral sa mga state universities at kumuha ng kurso sa Engineering o Chemistry.

Ito ay kabilang sa community development programs ng SCPC na naglalayong magdulot ng inklusibong pag-unlad sa mga impact communities nito.



# PAANO NAGIGING KURYENTE ANG COAL?

Ang *coal* ay isa sa pangunahing pinagmumulan ng elektrisidad sa bansa. Ito ay namimina sa kailaliman ng lupa at hitik sa karbon na siyang pinagkukunan ng init bilang enerhiya sa paggawa ng kuryente.

Malaking bahagi ng enerhiyang isinusuplay sa bansa ay mula sa mga *coal-fired power plants* sa iba't ibang bahagi ng bansa.

Sa kasalukuyan, mayroong 28 *coal-fired power plants* sa bansa at kabilang dito ang Sem-Calaca Power Corporation (SCPC) at Southwest Luzon Power Generation Corporation (SLPGC). Mayroon itong kabuuang kapasidad na 900 *megawatts* na nagsu-suplay ng kuryente sa Luzon at Visayas *grids*.

Ang mga planta ng SCPC at SLPGC

ay mahigpit na sumusunod sa mga patakaran at pamantayan ng Department of Environment and Natural Resources (DENR), kabilang na ang paggamit ng teknolohiya upang mabawasan ang epekto nito sa kapaligiran.

Ang *coal* na hinahatid ng *barge* sa Calaca, Batangas ay namina sa isla ng Semirara, Antique na pinagmumulan ng 99% *coal* sa buong bansa. Ito ay pinangangasiwaan ng Semirara Mining and Power Corporation (SMPC), ang *parent company* ng SCPC at SLPGC.

Ginagamit ang *coal* bilang panggatong sa mga planta upang painitin ang tubig sa tinatawag na *boiler*. Ang *high temperature steam* na inilalabas ng mainit na tubig ang nagbibigay ng

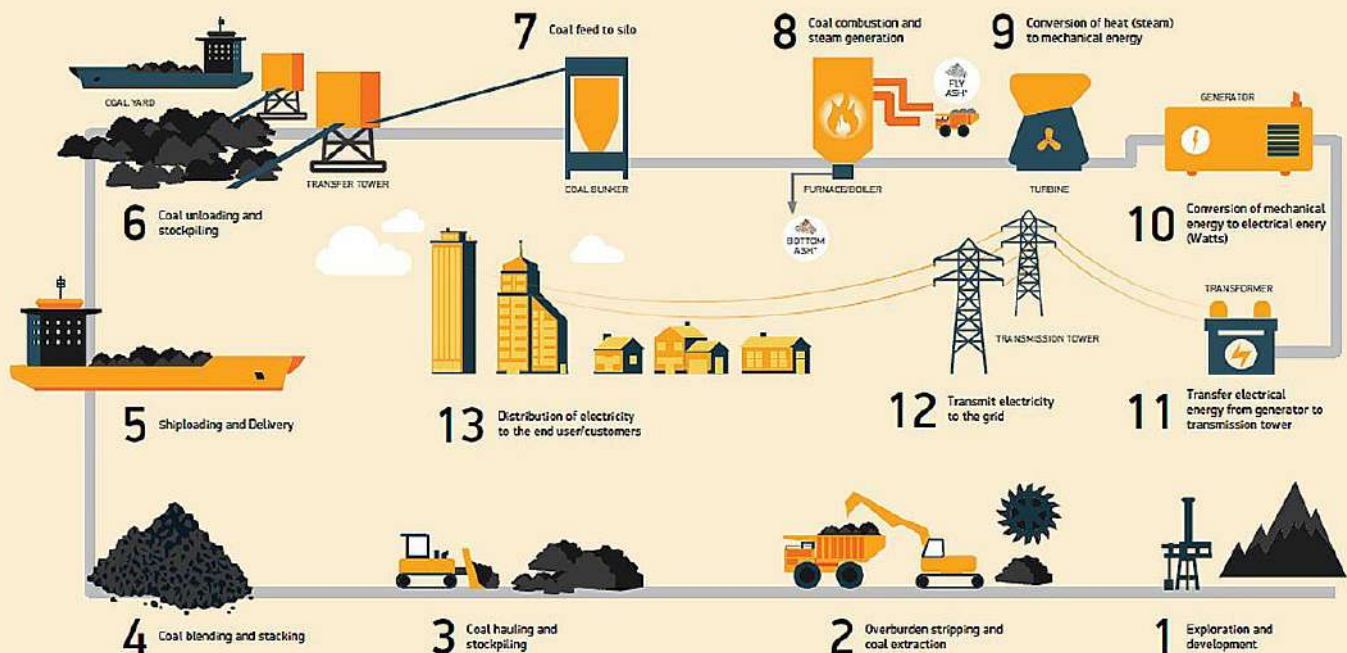
*pressure*, na nagpapaikot sa mga turbina na nagpapaikot naman sa *electric generator* upang lumikha ng kuryente.

Ang nagawang kuryente ay dinadala sa *Wholesale Electricity Spot Market (WESM)*, ang merkado ng mga produkto ng mga *power plant operators*. Mula sa WESM, kinukuha ito ng mga *power distribution companies* gaya ng Meralco, BATELEC, at iba pang mga kooperatiba na siyang nagbebenta sa mga komunidad at *commercial establishments*.

Dahil ang SMPC ang nag-iisang vertically integrated energy company (kombinasyon ng operasyon ng pagminina at paggawa ng kuryente) sa bansa, nakapaghahatid kami ng maaasahan at abot-kayang enerhiya sa buong bansa.



## FROM COAL EXPLORATION TO ELECTRICITY



We advocate for the minimization of our Company's environmental impact to make sure that our natural resources are conserved and protected. We conduct various monitoring activities regularly, all of which are routinely checked by the Department of Environment and Natural Resources (DENR). These quarterly monitoring activities are done with a DENR- accredited third-party consultant and results of which are validated through a separate Multi-partite Monitoring Team (MMT) validation activity.

## WATER QUALITY MONITORINGS

Groundwater								
May 26, 2021								
Station	Temperature, °C	pH	Color, ACU	TSS	Phosphate	Nitrate	Chloride	Fecal Coliform
GW1-Dacanlao Water System	30	7.0	<5	1	0.14	0.76	10.7	<1.1
GW2-New DMCI Bunkhouse	29	7.5	<5	<1	0.12	1.21	7.3	4.6
GW3-BRP Well	29	6.7	<5	1	0.14	0.88	5.6	<1.1
GW4-Gate 4 Well	29	7.4	<5	<1	0.16	0.78	9.6	<1.1
GW5-Workers' Barracks	30	7.7	5	8	0.08	0.75	9.2	<1.1
<b>DENR Standard</b>	<b>26-30</b>	<b>6.5-8.5</b>	<b>-</b>	<b>50</b>	<b>0.5</b>	<b>7</b>	<b>250</b>	<b>&lt;1.1</b>

Notes: Groundwater quality monitoring results are within DAO 2016-08 Water Quality Guidelines for Class A, except for Fecal Coliform of GW2. GW2, an observation well, is for domestic use only. GW 3 and GW 4 are observation wells inside the plant and are for domestic use only. The plant has Water Station which supplies the drinking water of employees.

River Water									
Station	Temperature, °C	pH	Color, ACU	BOD, mg/L	TSS, mg/L	Phosphate, mg/L	Nitrate, mg/L	Chloride, mg/L	Fecal Coliform, MPN/100mL
CR1-Cawong River Upstream	28	7.6	5	<1	7	0.17	0.99	7.3	16 x 10 <sup>4</sup>
CR2-Cawong River Midstream	29	7.7	5	<1	7	0.16	0.98	9.2	24 x 10 <sup>4</sup>
CR3-Cawong River Downstream	30	7.6	5	1	68	0.19	0.76	1,115.20	54 x 10 <sup>3</sup>
DR1-Dacanlao River Upstream	29	7.7	5	<1	56	0.23	0.85	7	16 x 10 <sup>5</sup>
DR3-Dacanlao River Downstream	29	7.7	5	<1	54	0.22	0.92	5.8	28 x 10 <sup>5</sup>
<b>DENR Standard</b>	<b>25-31</b>	<b>6.5-9.0</b>	<b>-</b>	<b>7</b>	<b>80</b>	<b>0.5</b>	<b>7</b>	<b>350</b>	<b>200</b>

Notes: Freshwater quality monitoring results comply with DAO 2016-08 Water Quality Guidelines for Class C, except for Fecal Coliform of all stations and Chloride of CR3. High Chloride concentration at CR3 is due to seawater intrusion (high tide during sampling). The plant does not discharge wastewater into any of the rivers.

## PLANT EFFLUENTS MONITORING

Plant Effluents								
Station	Temperature, °C	pH	TSS, mg/L	Oil & Grease, mg/L	Phosphate, mg/L	Boron, mg/L	COD, mg/L	Sulfate, mg/L
<b>SCPC</b>								
Condenser Outlet 1	35	8.1	2	<1.0	<0.01	4.74	178	3076
Condenser Outlet 2	-	-	-	-	-	-	-	-
SCPC Outfall Discharge	35	8.1	3	<1.0	<0.01	4.45	164	2895
Discharge Canal	-	-	-	-	-	-	-	-
<b>SLPGC</b>								
Condenser Outlet 3A	34	8.1	3	<1.0	<0.01	4.88	150	2958
Condenser Outlet 3B	34	8.1	5	<1.0	<0.01	4.67	166	2729
Condenser Outlet 4A	35	8.1	6	<1.0	<0.01	4.58	178	2898
Condenser Outlet 4B	35	8.1	3	<1.0	<0.01	4.73	186	3175
SLPGC Outfall Discharge	31	8.4	5	<1.0	<0.01	4.94	162	2155
<b>Common Outfall Discharge</b>	<b>33</b>	<b>8.1</b>	<b>3</b>	<b>&lt;1.0</b>	<b>&lt;0.01</b>	<b>4.86</b>	<b>184</b>	<b>2429</b>
<b>DENR Standard</b>	<b>3<sup>b</sup></b>	<b>6.0-9.0</b>	<b>100</b>	<b>10</b>	<b>1</b>	<b>20</b>	<b>200</b>	<b>550</b>

Notes: Plant effluent quality monitoring results are within DAO 2016-08 General Effluent Standards for Class SC. Sulfates are inherent to marine water. Source of Condenser Outlets, Outfall Discharge and Common Outfall Discharge are all marine (sea) water. Condenser Outlet 2 is on shutdown and Discharge Canal has no flow at the time of sampling.

## AMBIENT AIR QUALITY MONITORINGS

Ambient Noise Quality Monitoring Results				
May 26-27, 2021				
Station	Morning	Daytime	Evening	Nighttime
In Front of South Bay Terminal	64	61	59	43
Outside Gate 1	64	61	60	49
Intersection going to SLPGC	63	62	63	50
Dacanlao Highway	65	67	68	54
In front of Mr. M. Secreto's House	65	68	68	50
In front of Mr. A. Valencia's House	65	61	61	44
Water Intake, before Dacanlao Bridge	62	66	65	42
In front of SLPGC Water Intake	61	56	60	46
<b>NPCC Standard, Class D</b>	<b>70 dBA</b>	<b>75 dBA</b>	<b>70 dBA</b>	<b>65 dBA</b>

Upwind Station (Brgy. Timbain, Calaca, Batangas)					
PARAMETERS	MORNING	DAYTIME	EVENING	NIGHTTIME	DENR Limit ug/Ncm
Sulfur Dioxide (SO <sub>2</sub> )	<7	<7	<7	<7	340
Nitrogen Dioxide (NO <sub>2</sub> )	<1	<1	<1	<1	260
Total Suspended Particulates (TSP)	24	22	28	17	300
Particulate Matter 10 (PM <sub>10</sub> )	28	19	27	21	200

Downwind Station (Brgy. Carenahan, Balayan, Batangas)					
PARAMETERS	MORNING	DAYTIME	EVENING	NIGHTTIME	DENR Limit ug/Ncm
Sulfur Dioxide (SO <sub>2</sub> )	<7	<7	<7	<7	340
Nitrogen Dioxide (NO <sub>2</sub> )	4	<1	3	<1	260
Total Suspended Particulates (TSP)	75	27	31	45	300
Particulate Matter 10 (PM <sub>10</sub> )	25	16	13	14	200

